

**TRAILING HITCH KIT CONNECTING CONVERTIBLE  
TRACTOR TO ATTACHMENT DRAWBAR**

**GENERAL**

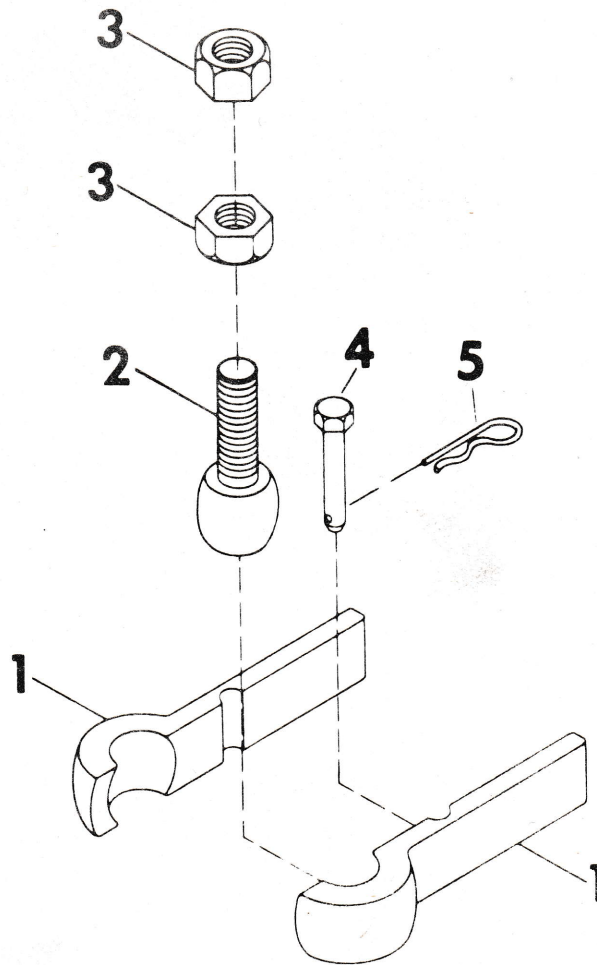
1. The Trailing Hitch Kit is designed and built to give many years of excellent service. The kit connects trailing attachments to the rear hitch of most convertible and riding tractors. Once properly installed, tools are not needed to connect and disconnect trailing attachments. Also, only one Trailing Hitch Kit is needed per tractor: the socket portion of the device is not permanently fixed to the drawbar of trailing attachments.
2. The Owners Manual includes the parts list, set-

ing up the hitch, safety and maintenance instructions. Use the parts list for reference to individual part numbers. Contact the Gravelly Dealer for further information.

3. Purpose: Free movement, connecting device. Features: Socket quick-connects to attachments.

Tractor/Attachments that connect with the Trailing Hitch Kit:

- 7.6 Convertible: Riding Sulky
- C10A and C12 Convertibles: Riding Sulky Coupler Strut Weldment Kit is required for the Lawn Roller and Cart
- 400 and 800 Series Riders (except 408):  
Lawn Roller  
Cart



<u>ITEM NO.</u>	<u>PART NO.</u>	<u>DESCRIPTION</u>
1	12572P1	Split Socket
2	12570P1	Ball Stud
3	124944	5/8 - 18 Hex Jam Nut
4	11685P1	Drawbar Pin
5	11860P1	Hair Pin Cotter

fig 1

ILLUSTRATED PARTS LIST

## INSTALLATION

1. Run one jam nut almost all the way on the shank portion of the ball stud, fig 1, Items 2 and 3.
2. Convertible Tractors: The hole in the rear hitch is threaded to accept the ball stud.
  - A. Run the ball stud in the hole from under the hitch so as the ball is down.
  - B. Run it all the way to the jam nut and make it tight.
  - C. Run the other jam nut down tight against the hitch.
  - D. With a wrench, tighten both jam nuts against the hitch.
3. Riding tractors with standard rear hitches or drawbars: the hole in the hitch is not threaded.
  - A. Place the ball stud in the hole from above the hitch so as the ball is up.
  - B. Run the other jam nut up tight against the hitch.
  - C. With a wrench, tighten both jam nuts against the hitch.
4. Riding tractors with liftable rear hitches: Use Rear Hitch Weldment 18866A1 on all liftable rear hitches.
  - A. Connect the rear hitch weldment to the liftable rear hitch (see the hitch manual).
  - B. Place the ball stud in the hole from above the weldment so as the ball is up.
  - C. Run the other jam nut up tight against the weldment.
  - D. With a wrench, tighten both jam nuts against the weldment.
5. Apply a liberal coat of general purpose grease to the cupped insides of the split socket, fig 1, Item 1.
6. Cup the split socket around the ball portion of the ball stud.
7. While holding the shank portions of the split socket together, slide the shanks into the drawbar of the trailing attachment.
8. Align the holes in the attachment drawbar with the channel formed between the two shanks of the split socket.
9. Drop the drawbar pin down through the holes in the drawbar and fasten it on the bottom side with the hair pin cotter, fig 1, Items 4 and 5.

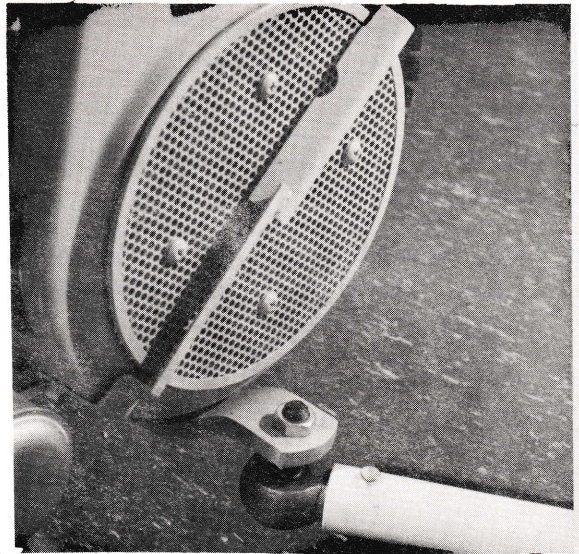


fig 2

## TRAILING HITCH KIT CONNECTING 400 SERIES TRACTOR TO ATTACHMENT DRAWBAR

### ROUTINE MAINTENANCE

1. Regrease the ball and socket when it appears to be dry and/or caked.
2. Periodically inspect the drawbar pin for wear and be sure that the hair pin cotter is in place.

### SAFETY

1. READ THE TRACTOR OWNERS MANUAL. Be familiar with all controls and follow safety precautions outlined in the manual.
2. DO NOT ATTEMPT to use the Trailing Hitch Kit to connect anything other than Gravely authorized equipment to a tractor. Unauthorized equipment could cause damage to the equipment and/or the operator.
3. DO NOT ATTEMPT to overload the Trailing Hitch Kit. Overloaded attachments connected by this hitch could cause damage to the equipment and/or the operator. Load is defined, in this case, as the resistance to the tractor by the attachment being pulled.

## REMOVAL

1. It is not necessary to remove the ball stud from the tractor.
2. The split socket may be stored in the drawbar in the normal manner of Installation, paragraphs 7, 8 and 9.

## WARRANTY

Products manufactured by Gravely are warranted to be free from defective material and workmanship for a period of one year from date of purchase, under normal use by a homeowner, and for a period of ninety (90) days from date of purchase, when used for commercial purposes.

Any defective part manufactured by Gravely will be replaced without charge provided such part is certified as defective by the manufacturer or by the manufacturer's expressly authorized representative.

### IMPORTANT PROVISIONS

The foregoing warranty is in lieu of all others and GRAVELY MAKES NO REPRESENTATION OR WARRANTY OF ANY KIND, EXPRESS OR IMPLIED, AS TO MERCHANTABILITY, FITNESS FOR PARTICULAR PURPOSE, OR ANY OTHER MATTER.

This warranty is not subject to change or modification by field representatives or Gravely dealers.

Certain components carry separate warranties by the manufacturer of such components. Defective components are subject to their manufacturer's warranties, and any claims, work, or return of parts must be through an authorized Gravely dealer. Service costs for the transporting of a unit to and from the dealer are the responsibilities of the customer, and when such service is performed by the dealer, the dealer will charge the customer the usual rate for such service.

It is the dealer's responsibility to mail the "Warranty Card" to the manufacturer within fourteen (14) days after date of purchase to ensure prompt handling of any warranty claim by the dealer or the manufacturer.



A Division of Clarke-Gravely Corporation  
ONE GRAVELY LANE  
Clemmons, North Carolina 27012